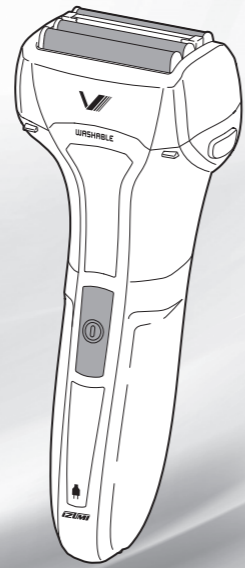




Instructions for Use (IFU)

Reciprocating shaver IZF-V543W



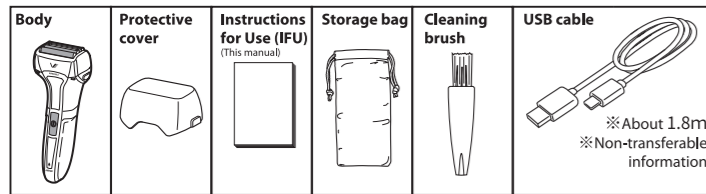
- Thank you for purchasing this reciprocating shaver.
- In order to use the product correctly and safely, please read the IFU completely before the first use of it. After reading the IFU, please keep it properly in a place that is readily accessible.

Cutting line

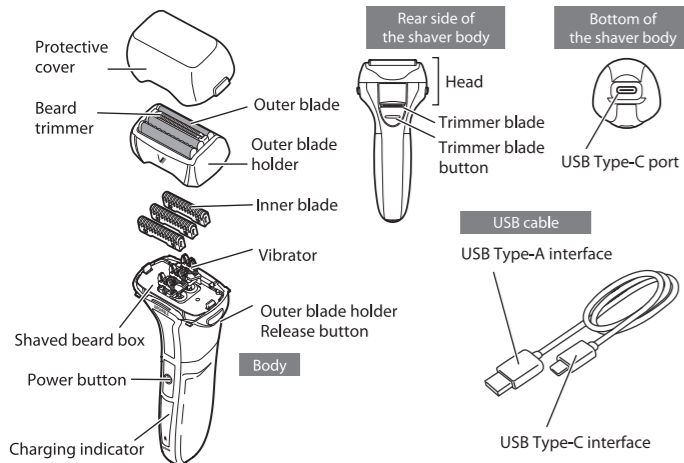
Cutting line

Bundle fittings

Check whether the following bundled fittings are complete before use.

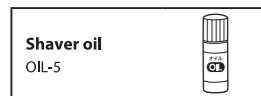


Part name



Maintenance and cleaning supplies (sold separately)

The following dedicated products are recommended to maintain and clean the product. Please purchase the maintenance and cleaning supplies from household appliance stores and other channels.



Recycling of storage battery

Danger

- Do not use the storage battery again once it is removed. The storage battery is exclusively used for this device. Do not use it on other devices.
- Do not damage or hit the storage battery. Do not disassemble or reform the storage battery by yourself.
- Do not keep the removed storage battery within the reach of children.
- Do not touch the storage battery with your hands in case of leakage. The liquid in the storage battery, if entering the eye accidentally, may cause blindness. If the leak comes into contact with your eye or skin accidentally, wash it immediately and then consult a doctor.
- Do not disassemble the product except the discarded product. Otherwise, it may cause fire, electric shock or injury. The product cannot be repaired again once it is disassembled. If you need to replace the battery or repair the product, please authorize the store where the product is purchased or our service window.

Li-ion Recycling of lithium battery

- The product contains batteries and/ or electronic waste that can be recycled. To protect the environment, please do not dispose of it in regular household waste. Instead, take it to designated electronic waste collection points available in your country for proper recycling.
- For further details, please consult the relevant local government department or organization in your residential region.

Method for removing the battery from the discarded product

Warning

- The following instructions are for guidance of product abandonment only, and cannot be used for guidance of repair. Please note in advance that the original performance of the product may not be used normally if you disassemble the product by yourself.

- 1 Please power on when the USB cable and power adapter are not connected, and run out of the storage battery.
 - Warning** Residual power in the storage battery may cause electric shock, fire or scald.
- 2 Remove the protective cover, outer blade holder and inner blade.
 - ① Open and remove the back cover.
 - ② Remove a screw using the cross screwdriver, and open and remove the front cover.
 - Warning** Be careful not to be scratched by the edge of the part.
- 3 Pull out the battery cover at the bottom of the shaver body along the arrow.
- 4 Remove the storage battery, and cut the wire using pliers or other tools.
- 5 Cover the wiring part of the removed storage battery with plastic tapes for insulation.

Precautions for safety

To prevent personal or property damage to the users and people around them, please fully read the Precautions for Safety and use the product properly.

Identifier class

Matters that must be observed in the IFU are classified as follows.

Danger	Indicates the contents that may cause death or serious damage to personnel.	Warning	Indicates the contents that may cause injury to personnel or damage to items.
---------------	---	----------------	---

Icon meaning

	Indicates the contents that need special attention.		Indicates the prohibited contents.		Indicates the contents that must be implemented.
--	---	--	------------------------------------	--	--

Danger

- Do not disassemble, repair or reform the product by yourself. Otherwise, it may cause fire, electric shock or injury. If you need to repair the product, please consult the store where the product is purchased or our service window.
- Do not get the USB cable wet, pour water on it or wash it with water. Do not wash or wet shave the beard when using the AC power supply. Otherwise, it may cause electric shock or short circuit of the product.
- Do not use or store the USB cable in the bathroom or a damp place. Otherwise, it may cause electric shock or short circuit of the product.
- Do not use the product on a device with an output voltage other than DCSV. Otherwise, it may cause fire, electric shock or injury.
- Power adaptor is not included. When maintaining and cleaning the product, please remove the USB cable and power adapter from the socket. Do not pull out the product with wet hands. Otherwise, it may cause electric shock or injury.
- Do not use the USB cable when it is damaged. Otherwise, it may cause fire, electric shock or injury.
- Do not damage, pull hard, bend, twist, bind or process the USB cable. Do not press or clamp the USB cable with heavy weights. Do not wrap the cable around the shaver body when storing the product. Otherwise, it may cause cable damage, fire or electric shock.
- The following people must use the product under the guidance of a guardian or caregiver who understands the method for safely using the product.
 - Children
 - Users who need help to use the product
 - ※ It is not recommended that the above people use the product alone.
- Do not allow children to play with the product. Otherwise, it may cause scald, injury, fire or electric shock.

Warning

- The USB cable of other products may not be suitable for the plug in, charging and AC usage mode of the product. Do not use the dedicated USB cable of the product for other products or to charge other products. Be sure to use products with the rated output power above DCSV and 1A when using the commercially available power adapter.

Note

- Check whether the blade is damaged or deformed before use. Do not use the blade if it is abnormal. Otherwise, it may cut the skin.
- Do not press the blade hard. Otherwise, it may cause damage to the blade and injury to the skin.
- Do not make the needle or dust adhere to the interface. Otherwise, it may cause fire, electric shock or short circuit.
- Do not use the product for purposes other than face shaving or use it as commercial equipment. The product is a general household product. In daily use at home, accidents or product failure may occur when the product is used for purposes other than face shaving.
- Do not drop the product. Otherwise, it may cause product failure.
- Do not use the product with your family members or others. Otherwise, it may cause cross infection or inflammation.

Precautions for use

- Do not contaminate the product with alcohol, diluent, volatile oil or other liquids, otherwise they may damage the plastic parts of the product, and cause fire or electric shock.
- Wash the shaver body with water and dry it when it is stained with shaving lotion, shaver oil, shower gel, facial wash and others. Without treatment, the plastic parts of the product may be cracked, and the coating may be cracked or discolored.
- A cloth is dipped in a neutral detergent diluted with water, twisted into a bundle and used to wipe the dirt on the shaver body.
- Do not charge the product in a place around which the temperature is lower than 5°C or higher than 35°C, in direct sunlight, or near heating units such as heating facilities and incandescent lamps. Otherwise, the charging time may be shortened, and accidents such as fire, electric shock and shaver body deformation may occur.
- An appliance should never be left unattended. Insulation degradation may cause electric leakage, fire or other accidents.
- The surface of the outer blade may be blackened when the skin oil or shaver oil floats on the surface. Please gently wipe it with facial tissue or other objects before use. In addition, do not apply excessive shaver oil when maintaining and cleaning the product.
- Please use and keep the product in a place out of reach of children. Otherwise, it may cause accidents or personnel injury.
- Please keep it in a dry place after use. The inside of the shaver body or the blade may be condensed and rusted when placing the product in a humid place such as the bathroom, thereby leading to product failure.
- Be aware of the rashes or wounds, if any, on the skin when using the product. Using the product on the skin with rashes or wounds may cause injury or worsen skin problems.

Life of storage battery

If the battery can be used only two or three times after it is charged at the specified time, it means that the battery life may be running out. Please consult the store where you purchase the product. In addition, if the battery is left uncharged for more than half a year, its performance will be reduced due to self-discharge. Therefore, please charge the battery at least once half a year if you do not use it for a long time.

Check whether it is faulty

If you suspect that the device is faulty, please consult the following content for treatment. If the problem is still not solved after treatment, please consult the store where the device is purchased or our service window.

Symptom/ inspection item	Possible reasons	Solutions
The shaved beard flies everywhere.	The shaved beard and other dirt are lumped.	Please clean after each shaving. (☞ Method for Maintenance and Cleaning)
	The outer blade holder is not properly installed.	Please properly install the outer blade holder. (☞ Method for Maintenance and Cleaning)
It is smelly.	The shaved beard and other dirt are lumped.	Please clean after each shaving. (☞ Method for Maintenance and Cleaning)
The sharpness of the blade decreases.	The shaved beard and other dirt are lumped.	Please clean after each shaving. (☞ Method for Maintenance and Cleaning)
	The outer blade is damaged and deformed.	Please replace the blade. (☞ Replacement of Blades)
The blade is heating.	No shaver oil is applied to the blade.	Please clean after each shaving. (☞ Method for Maintenance and Cleaning)
	The surrounding temperature is not within the recommended temperature range in use.	The recommended temperature is 5°C-35°C. The shaver may not work when it is not used within the recommended temperature range.
The shaver does not work after pressing the power button.	The remaining capacity of the storage battery is low.	Please charge. (☞ Method for Charging)
	It is left unused for more than half a year.	Please charge. (To avoid battery deterioration, please charge the battery at least once half a year if you do not use it for a long time.) (☞ Method for Charging)
The skin is blackened after shaving.	The skin oil or shaver oil floats on the surface.	<ul style="list-style-type: none"> • Please gently wipe it with facial tissue or other objects. • Do not apply excessive shaver oil.

After-sales service

About the warranty

Be sure that information on the warranty is attached such as "Store Name" and "Date of Purchase" has been filled in. Please read the warranty content carefully and keep this warranty properly. Calculated from the date when the product is purchased, the warranty period is 2 years for the shaver body (except for the blade). The warranty is not international; it is only valid in the country of purchase.

About authorized repair

In case of abnormalities or failure during use, or other situations such as damage, we can provide paid repair according to the customer's wish if the product function can be maintained by repair. Free repair can be provided according to the content of this warranty during the warranty period. Please authorize the store where the product is purchased. If you cannot consult the store, please consult our service window.

Storage life of functional repair parts

The company will keep the functional repair parts (parts necessary for maintaining the product function) of the product within 6 years after the production of the reciprocating shaver is halted.

Contact information for consultation on product related matters

If you have any questions for matters related to the product, please consult us at the following contact information.

Maxell Asia, Ltd.

Units nos. 03B-06, 13/F, 909 Cheung Sha Wan Road, Cheung Sha Wan, Kowloon, Hong Kong
Tel: (852) 2730 9243

Maxellhk Maxellhk



www.maxell.com.hk

Specification

Power supply	Charging and AC
Blade operation mode (main blade)	Reciprocating
Blade operation mode (trimmer blade)	Reciprocating
Power consumption	About 7W
Standard charging time	About 2hrs
Storage battery	Lithium battery
Dimension	W 66 X T 40 X H 155 (mm)
Shaver weight	About 165 g

Method for Charging

Warning

- Be sure to use products with the rated output power DC5V and above 1A when using the commercially available power adapter.
- Check whether the USB cable, power adapter and surrounding area of the socket are normal before charging.

- Tip**
- The recommended charging temperature is 5°C~35°C. Battery performance may degrade or charging may fail when the temperature is too high or too low.
 - Charging time may change with the remaining battery capacity.

- Power off, and put the head cover.**
 - Charging fails when powering on.
- Insert the USB Type-C interface into the shaver body properly.**

Warning

- Check whether there are foreign objects, such as water droplets or dirt, between the USB Type-C interface and the shaver body before inserting the USB Type-C interface. Otherwise, it may cause fire, electric shock or short circuit.

- Insert the USB Type-A interface into the commercially available power adapter.

- Insert the power adapter into the socket.

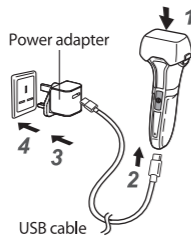
- Start charging, and the charging indicator turns green.
- Charging for about 2 h. After fully charged, all charging indicators are flickering simultaneously for 5 min and then off.
- During charging, the temperature of the shaver body and power adapter may rise, which is not a fault.

Indicator	
Charging	Flicker → Normally on
Charging completed	All are flickering → Off
Remaining charge capacity	3 stages
Charging reminder	The red lamp is flickering
In operation	Remaining capacity reminder

- After full charged, remove the power adapter and USB Type-A interface from the socket.

Warning

- Do not pull the cable when removing the power adapter from the socket, or disconnecting the USB Type-A and USB Type-C interface.



Method for Use

Power on/off

- Hold down the side of the protective cover, and remove the cover.
- Check whether the blade is damaged or deformed.
- Press the power button to power on.

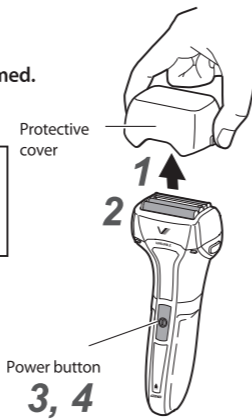
Warning

- Do not power on when the outer blade is removed. The skin may be injured or sucked into the shaver when the outer blade is not removed and only the inner blade is working.

- When the blade is vibrating, start shaving.

- Press the power button to power off after use.

- Cleaning and maintenance are recommended after each use. (☞ Method for Maintenance and Cleaning)
- Please put the protective cover and store the shaver after maintenance.



Use in the AC mode

Warning

- Do not get the USB cable wet, pour water on them or wash them with water. Do not use or store the USB cable in the bathroom or damp place when using AC power. Do not wash or wet shave the beard. Otherwise, it may cause electric shock or short circuit of the product.

- Connect the USB cable with the commercially available power adapter before use (In the AC mode). For the connection of the USB cable, please refer to Method for Charging.

Warning

- Remove the USB cable and power adapter from the socket when not charging the product.
- If the remaining battery capacity is low, the shaver body may be unable to work. At this time, please charge the product for at least 1 min before use.
- In the AC mode, the temperature of the USB cable and power adapter may rise, which is not a fault.
- For reasons of the structure of the product, the AC mode will not be available when the storage battery is running out. In this case, please send it for repair (paid).

Method for dry shaving

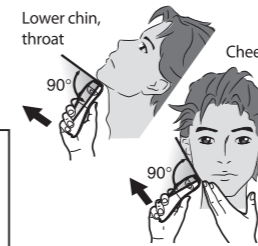
- You can dry shave the beard using the product at any time.
- The beard may be pulled after growing for more than 2 days. Please shorten it using the trimmer blade before using the shaver.
- Please completely wipe the skin oil before using the shaver.

- Keep the outer blade at a right angle to the skin, and gently touch the skin with the blade.

- Tip**
- The force applied to the skin is recommended to be about 400g.
 - Do not press the blade hard, or slide the blade side to side.

Warning

- Too much pressure on the skin (the reference value is about more than 800g) may expedite the wear of blade, reduce the sharpness or damage the outer blade.
- If the shaving stress further concentrates on part of the outer blade, damage may be caused to the outer blade or the skin.



- Gently pull the skin with one hand, and slowly slide the blade in the opposite direction of the beard growth.

- The beard under the chin and around the throat tends to grow at an angle, so it's a common area for missed spots while shaving. If you stretch the skin and shave in a way that lifts the beard, it becomes easier for the blade to catch the hairs.

Method for using trimmer blade

The trimmer blade can be used to shave the stubborn beard or trim the temples.

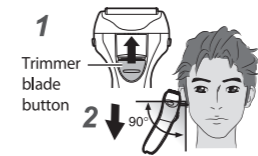
- Press the trimmer blade button and slide it up to show the trimmer blade.

- The trimmer blade can also be removed in the power-on state.

- Keep the blade touch the skin at a right angle (90°) and shave the beard.

- Tip**
- Do not press the blade of the trimmer blade hard, or slide the blade side to side. Otherwise, it may cut the skin.

- Power off and slide the trimmer blade to the original place after use.



Method for maintenance and cleaning

Warning

- When maintaining and cleaning the product, please remove the USB cable and power adapter from the socket. Do not pull out the product with wet hands. Otherwise, it may cause electric shock or injury.

Cleaning and maintenance are recommended after each use to maintain the performance of the product and prevent the shaved beard from the shaver head.

Method for washing

- Power off.
- Apply the dedicated cleaning foam of washing or other commercially available hand sanitizers to the outer blade.

Warning

- Do not use dedicated detergents for the kitchen, bathroom, toilet and other places. Otherwise, it may cause shaver body deformation or damage.

- Add a small amount of water to the outer blade (only when commercially available hand sanitizers are used).

- Power on, and last for about 15s.

- Power on
- Hold for about 15 s.
- Power off

- Press the head release button of the outer blade holder on both sides of the head to remove the outer blade holder.

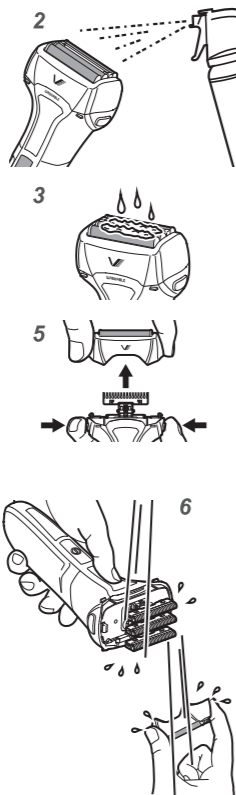
Warning

- Be sure to power off before disassembly.

- Wash clearly with water (cold water or warm water of about 30°C).

Warning

- Do not use boiling water. Otherwise, it may cause scald or shaver body deformation.
- Do not soak the shaver. Otherwise, it may cause failure to the shaver body.
- Please timely remove the shaving foam or gel, if any, on the outer blade. Deposits on the blade will cause motor overload and burning.



- Dry the wet part.

Warning

- Do not dry the shaver body using hair dryer or other devices. Otherwise, it may cause shaver body deformation or damage.

- Wipe off the water droplets with a towel or other things.
- Remove the outer blade holder and naturally dry the shaver body completely.

- Install the outer blade holder with the identifier 「V」 facing towards yourself.

- Apply shaver oil or commercially available oil dedicated to the shaver.

Warning

- Be sure to power off when wiping off the shaver oil. Otherwise, it may cause blade damage or personnel injury.
- Do not press the blade hard. Otherwise, it may cause blade damage or personnel injury.

- The shaver oil applied can make the blade vibrate more smoothly and provide the user with a comfortable shaving experience.
- Apply a drop of shaver oil to each blade.
 - Power on and hold for 10 s, and then power off.
 - Wipe off excessive oil with paper tissue.

Method for using the cleaning brush

Warning

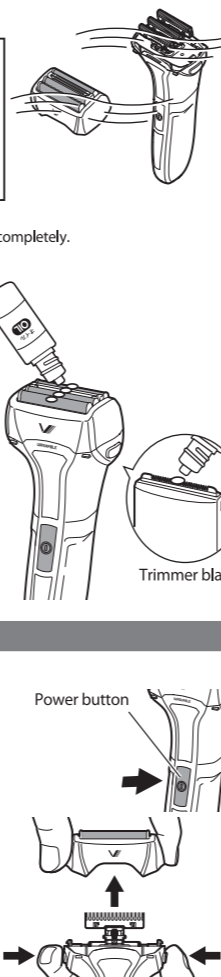
- Do not touch the metal part of the inner blade during cleaning. Otherwise, it may cause personnel injury.

- Power off.

- Press the head release button of the outer blade holder on both sides of the head to remove the outer blade holder.

Warning

- Be sure to power off before disassembly.



Warranty regulations

In case of failure when the product is normally used according to the IFU and other documents during the warranty period, you can repair or replace the product in our company according to this warranty. For details, please consult the store where the product is purchased or our service window.

- The repair will be paid in any of the following cases during the warranty period.
 - Failure or damage is caused since the product is not used according to the IFU or is improperly reformed or repaired.
 - Failure or damage is caused since the product is not properly kept after purchase (such as falling), or is moved or transported.
 - Failure or damage is caused by natural disasters, such as fire, earthquake, flood and lightning, and other external reasons such as public hazards, salt damage, gas damage (such as sulfide gas) or abnormal voltage.
 - Failure or damage is caused when the product is used as commercial equipment (the product is used as spare parts in vehicles, ships and other commercial facilities) or for purposes other than general household application (including display).
 - This warranty or proof of purchase (such as receipt) is not provided.
 - The date of purchase, customer name and store are not contained in this warranty, or the text is altered.
 - Gifts and consumables other than the shaver body.
 - A second-hand product purchased from auctions, second-hand stores or other channels.
- The customer shall pay for the delivery of the product during the warranty period.
- In case of relocation, please consult the store in advance.
- This warranty is not additionally issued. Please keep it properly to avoid loss.
- This product contains batteries and/ or electronic waste that can be recycled. To protect the environment, please do not dispose of it in regular household waste. Instead, take it to designed electronic waste collection points available in your country for proper recycling.
- The warranty is not international; it is only valid in the country of purchase.

※Please note in advance that the company may use the personal information (the content filled in the warranty) filled by the customer for the free repair service and safety inspection during the warranty period.

※Free repair is provided according to the conditions in this warranty within the time stated in this warranty. Therefore, this warranty does not limit the customer's legal rights. Beyond the warranty period, if you need repair or have any question, please consult the store where the product is purchased or our service window.

Cutting line

Cutting line

Replacement of blades

- The blade of the shaver is a consumable. Beyond the service life, the blade will be less sharp, and may be damaged and cut the skin. In order to ensure a good shaving experience, it is recommended to replace the blade within the following time.

Outer blade (replaced within about 1 year) SO-V557		Inner blade (replaced within about 2 years) SI-V55	
---	--	---	--

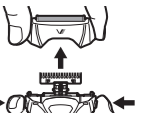
- The time for blade replacement is for reference only. The service life of the blade will vary according to the actual use.
- Please purchase the replacement blades from household appliance stores and other channels.
- After replacing the outer blade and the inner blade, please apply the shaver oil before use.

Before replacing the blade

Warning

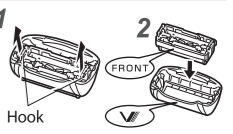
- Be sure to power off before replacement.
- Do not touch the metal part of the inner blade. Otherwise, it may cause personnel injury.

- Power off.
- Press the head release button of the outer blade holder on both sides of the head to remove the outer blade holder.



Method for replacing the outer blade

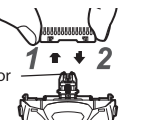
- Hold the hooks on the inner side of the outer blade holder one by one vertically to remove the outer blade.



- Find the front ("FRONT") of the new outer blade as shown in the figure, align it with the side with the icon 「V」 on the outer blade holder and insert it into the blade holder, until you hear a "click".

Method for replacing the inner blade

- Hold both sides of the inner blade and lift the blade directly up, and remove the blade one by one.
- Hold both sides of the new inner blade and keep the blade vertical, and install the blade in the vibrator one by one.



After replacing the blade

Install the outer blade holder with the identifier 「V」 facing towards yourself.

